



## Bridge Bracelet



### Materials needed:

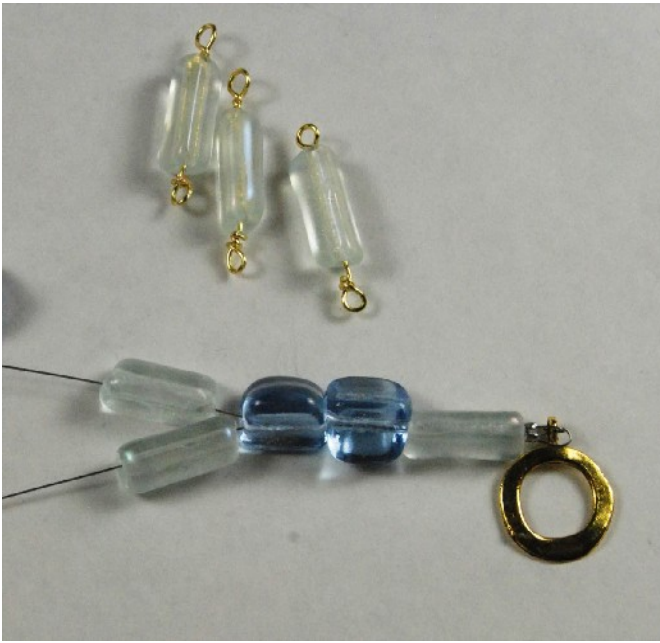
- 9-12 Thin clear triangle beads (refer to triangle bead mold instructions)
- 8-14 blue triangle beads
- flexible beading wire
- Crimp beads
- Clasp
- Brass beading wire
- Ruler
- Round nose pliers
- Wire cutters
- Crimp pliers



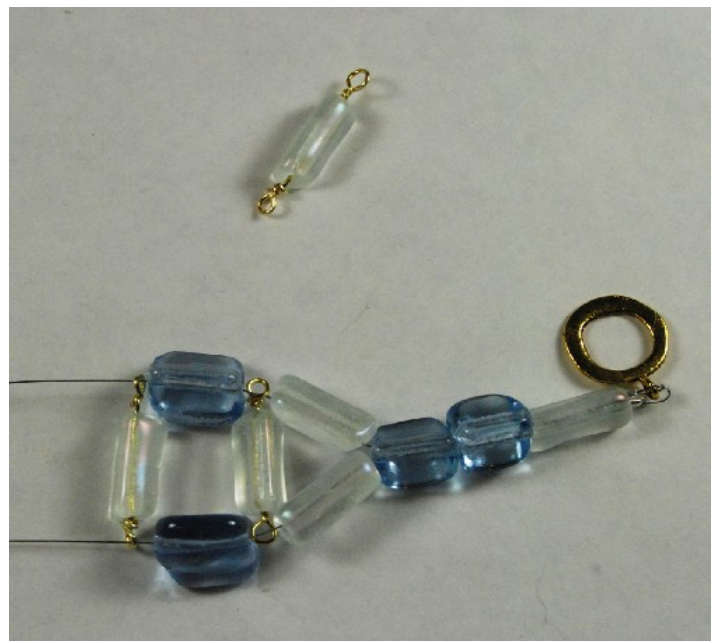
Step 1: Cut two 10" (24.5 cm) pieces of flexible beading wire and crimp one end of each wire to one end of the clasp.



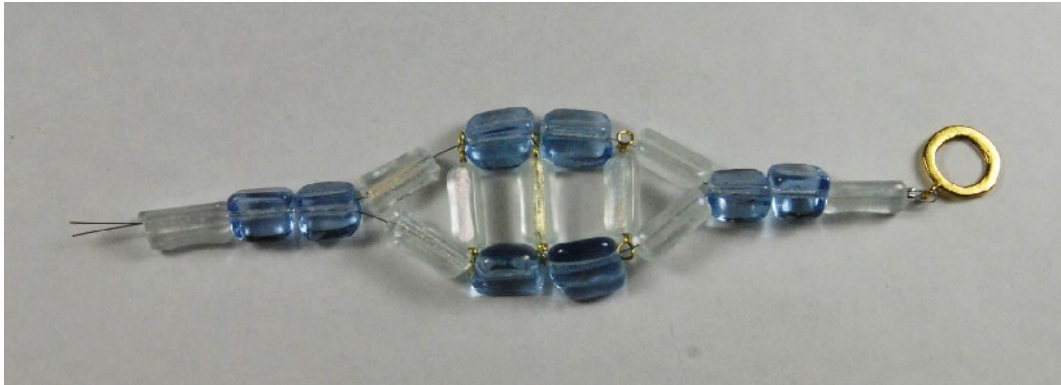
Step 2: Create a brass wire double ended loop with the thin triangle beads using the round nose pliers and wire cutters.



Step 3: Begin assembling bracelet – add one thin triangle bead over both strands of flexible wire, followed by two triangle beads. Then separate the flexible strands and add one thin triangle bead to each strand.



Step 4: Add a bridge bead, then a blue bead on each strand, and another bridge. Continue until all of the bridge beads are used.



Step 5: Finish assembly by reversing the pattern we started with. This bracelet size will vary based on how large you make your triangle beads. It's a good idea to monitor the length with your ruler as you assemble it.

To make the bracelet larger, you can increase the number of bridge bead segments, or, increase the number of blue beads on either end. To make the bracelet smaller, decrease the number of blue beads on each side.

Check the size before trimming flexible wire or adding the clasp. When you are happy with the length, crimp the flexible wire onto the other side of the clasp.

