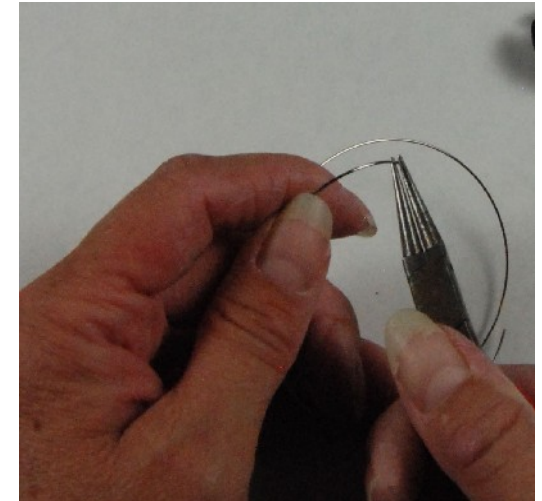
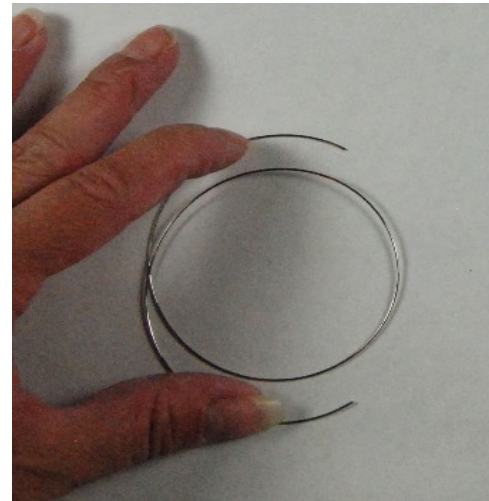




Materials needed:

- Channel beads (quantity will vary based on size used)
- Memory wire
- Ruler
- Round nose pliers
- Memory Wire cutters

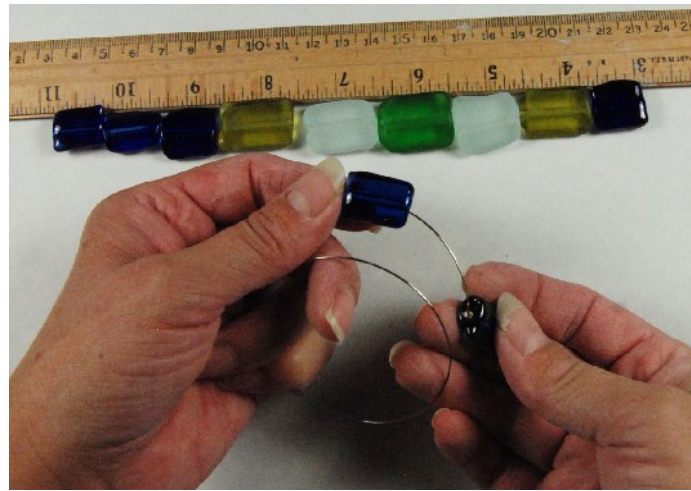
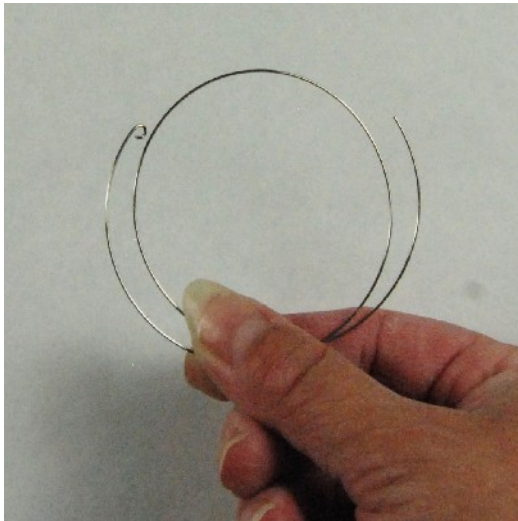
Lentil Bracelet



Step 1: Measure beads to determine how many you need. This is a bangle bracelet, so it will need more length than a bracelet with a clasp.

Step 2. Cut memory wire. Cut slightly longer than the measured beads.

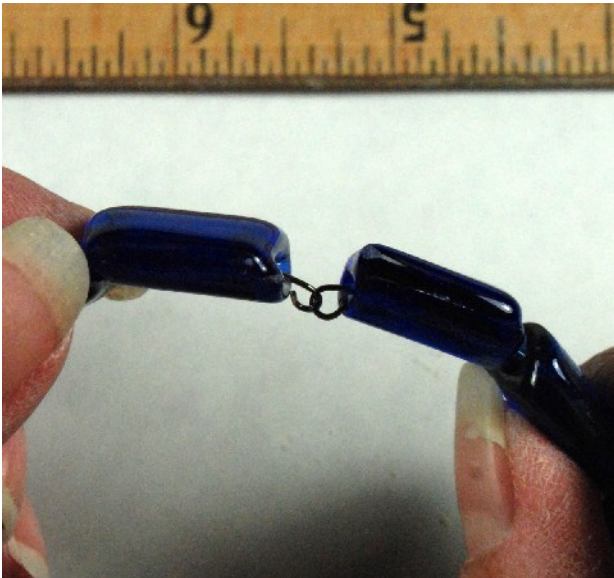
Step 3. Bend a small loop in one end of the wire with round nose pliers. This wire is very hard, be careful!



Step 4: Add beads in the order you selected.



Step 5: Bend the long end of the wire into a loop and trim the excess



Step 6. Slip the loops on either end of the wire together to make a continuous bangle bracelet.